
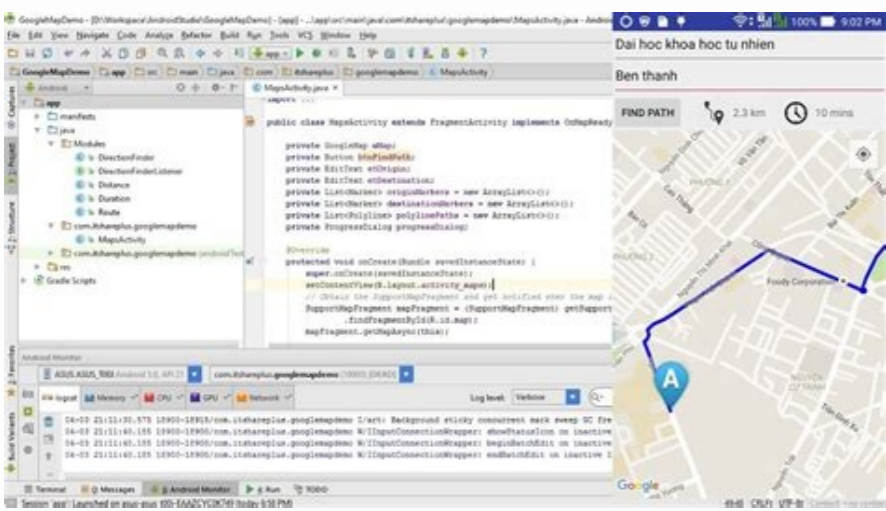
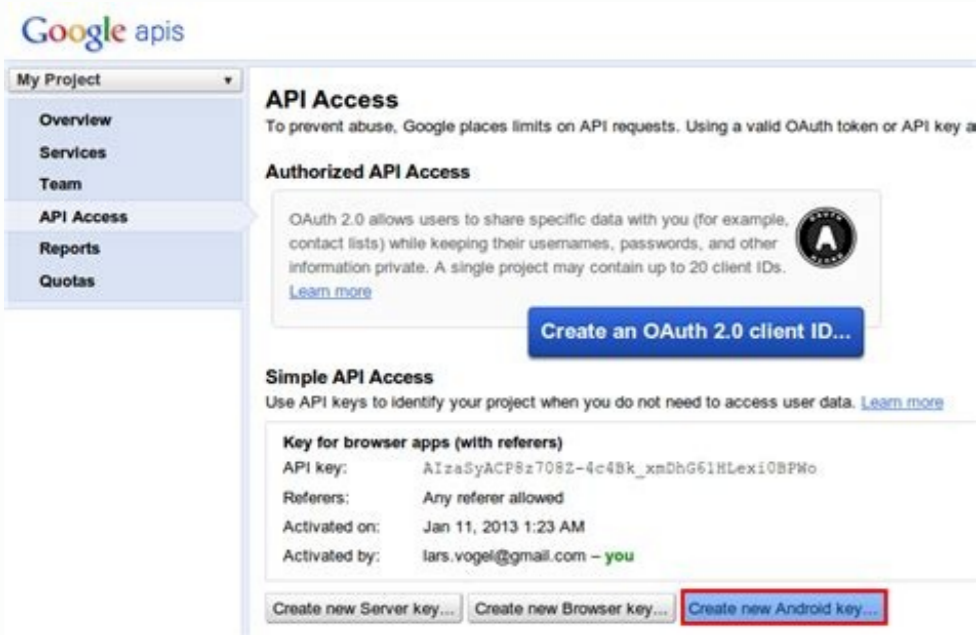
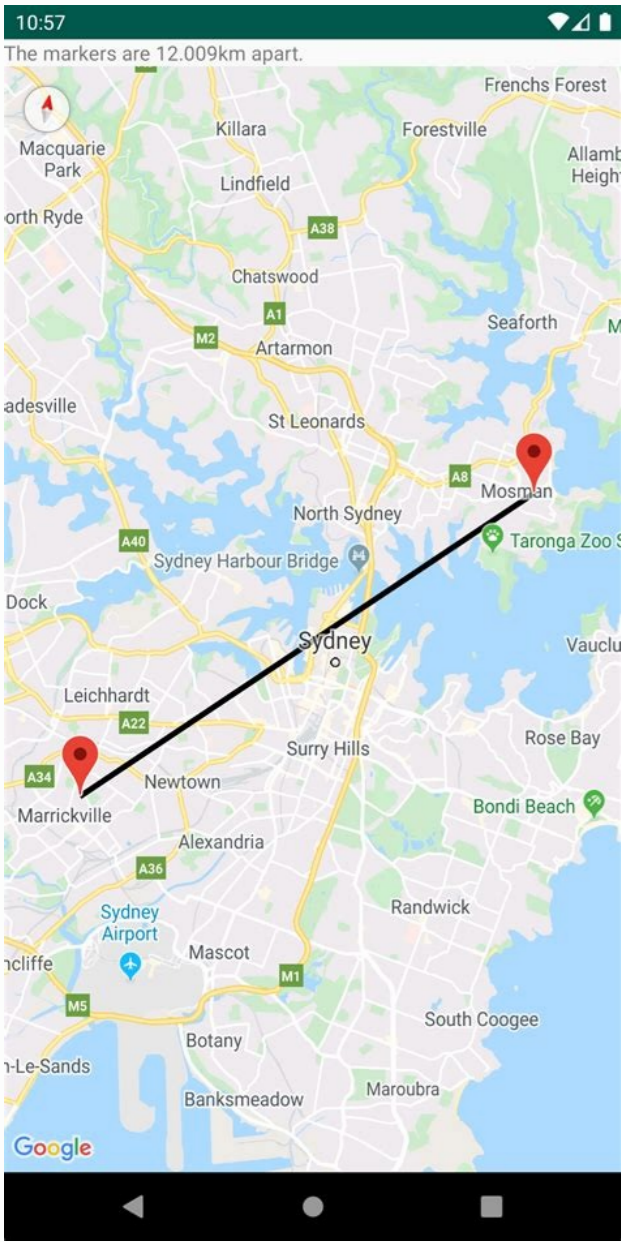
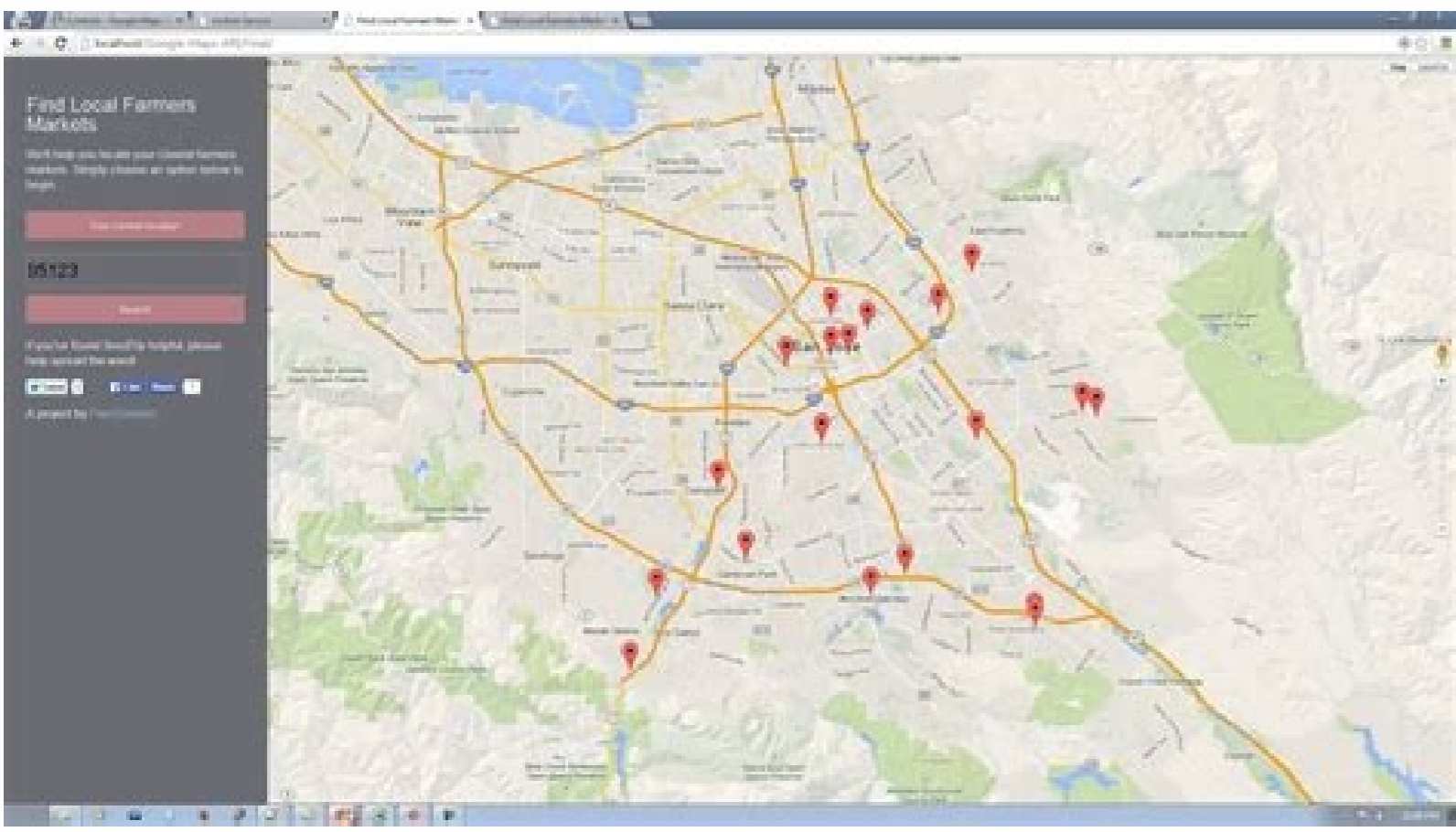


I'm not robot  reCAPTCHA

[Open](#)

# Navigation using google maps android api tutorial



googleMap.setMapType (GoogleMap.MAP\_TYPE\_NORMAL); googleMap.setMapType (GoogleMap.MAP\_TYPE\_HYBRID); googleMap.setMapType (GoogleMap.MAP\_TYPE\_SATELLITE); googleMap.setMapType (GoogleMap.MAP\_TYPE\_TERRAIN); Google Map Zoom, RotationWe can enable/disable zoom and map rotations using the following lines of code: googleMap.getUiSettings ().setZoomGesturesEnabled (true); googleMap.getUiSettings ().setRotateGesturesEnabled (true); Some Other customization methods available in the GoogleMap class are listed below.addCircle (Circle Options): This method adds a circle to the map.addPolygon (Polygon Options): This method adds a polygon to the map.addTileOverlay (TileOverlay Options): This method adds an overlay to the map.animateCamera (Camera Update update): This method moves the map based on update with a learn animation (); This method removes everything from the map.MyLocation (); This method returns the location of currently viewingwhereCamera (CameraUpdate update): This method repositions the camera according to the instructions in update.setTrafficEnabled (boolean enabled): This method switches layer on or off.snapshotTraffic (GoogleMap.SnapshotReadyCallback callback): This method a snapshot of the map.stopAnimation (); This method stops animation the camera if it nã an in progressAdding markers on Google Map googleMap.addMarker (new MarkerOptions ().position (new LatLng (37.4 233 438,-122.0 728 817)).title ("AppleA")).icon (BitmapDescriptorFactory.defaultMarker (BitmapDescriptorFactory.HUE\_GREEN)); googleMap.addMarker (new MarkerOptions ().position (new LatLng (37.4 629 101,-122.2 449 094)).ti Snippet ("Facebook HQ: Menlo ParkA"); googleMap.addMarker (new MarkerOptions ().position (new LatLng (37.3 092 293,-122.1 136 845)).title ("AppleA")); snippets () Used to view more data on the marker when touched. The camera is moved to a specific specific point The following snippet: GoogleMap.Animatamera (cameraupdatefactory.Newlatlngzoom (new latlng (37.4233438,-122.072817), 16)); In the code above 16 is the number of the zoom level. GetMenuItemInflater (); inflate (r.menu.menu main, menu) Return true; ) @Override Boolean Public OnOptionsItemSelected (MenuItem article) { Handle Action Bar click here. It A "e à" e SOPRENSITE.android Google Maps API Overview This tutorial implement some interesting features provided by the Android Google Maps API.Features include map markers, types of maps, cameras animations and a few more. Add the fragment of the map In the content\_main.xml layout as he had done in the previous tutorial. This attributes the mature to our MainActività. To get the GoogleMap object in our MainActivity class we must implement the OnMapReadyCallback interface and overwrite the OnmapReady callback method. TypeUxing Google map object We can also change the type of map. Before climbing the discussion. We can use them as shown below. FloatingActionButton recalls a new OnMapReadycallback method with a different type of map. Content\_main.xml contains the mature as shown below:

